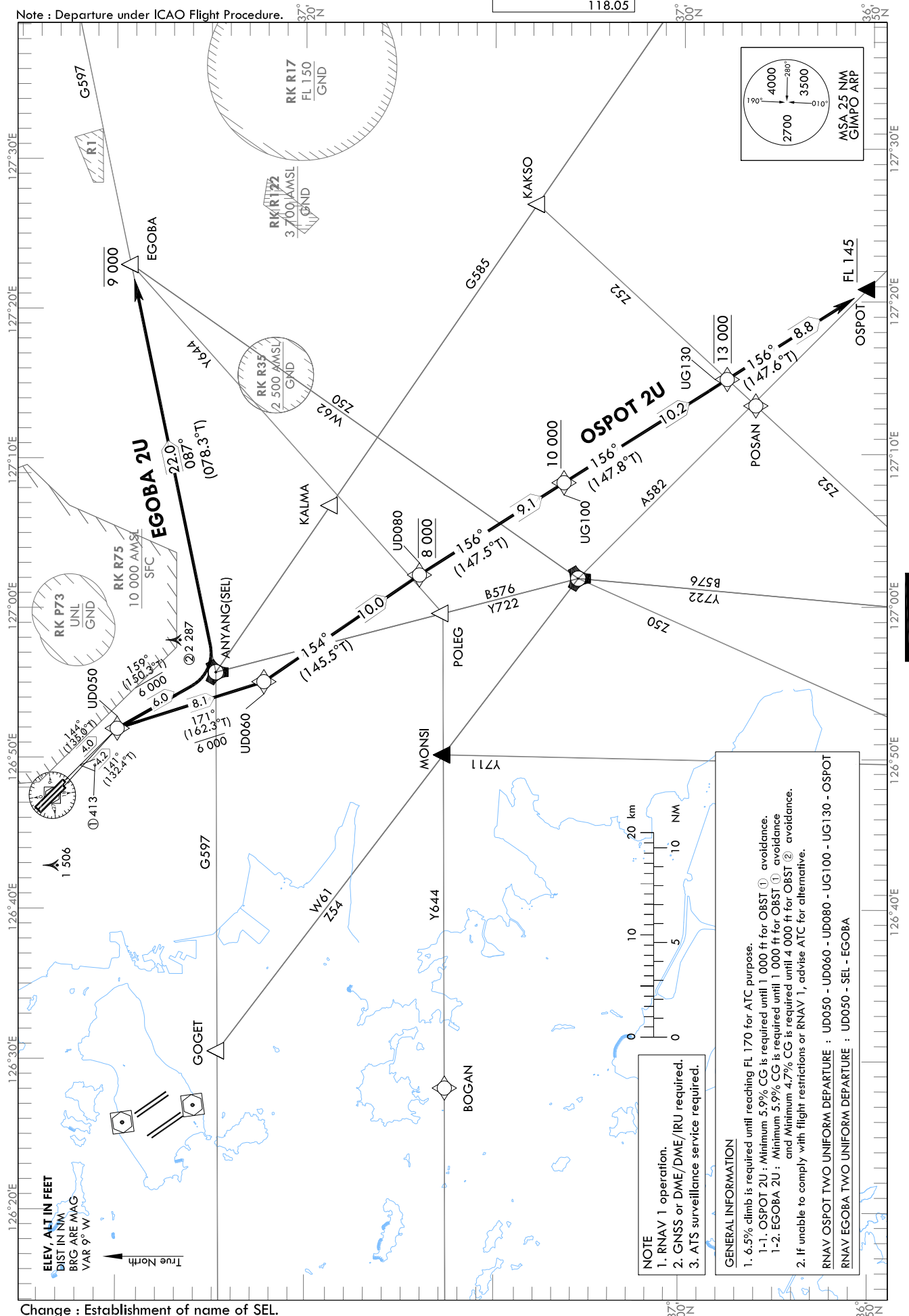


|            |     |        |
|------------|-----|--------|
| TRANSITION | ALT | 14 000 |
| TRANSITION | LVL | FL 140 |

|       |     |        |
|-------|-----|--------|
| SEOUL | DEP | 125.15 |
|       |     | 121.4  |
|       |     | 124.8  |
| GIMPO | TWR | 118.1  |
|       |     | 118.05 |

**SEOUL/Gimpo Intl(RKSS)  
RWY 14L/R  
RNAV OSPOT 2U, RNAV EGOBA 2U**

Note : Departure under ICAO Flight Procedure.



Change : Establishment of name of SEL.

## AERONAUTICAL DATA TABULATION

## Standard Instrument Departure Procedure Coding Tables

RNAV OSPOT 2U

| Serial Number | Path Descriptor | Waypoint Identifier | Fly-over | Course/Track<br>°M(°T)           | Distance<br>(NM)   | Turn direction | Altitude<br>(ft) | Speed<br>(kt) | Coordinates                | VPA/<br>RDH | Navigation specification | Remarks |
|---------------|-----------------|---------------------|----------|----------------------------------|--------------------|----------------|------------------|---------------|----------------------------|-------------|--------------------------|---------|
| 001           | CF              | UD050               | -        | 14L-144(135.0)<br>14R-141(132.4) | 14L-4.0<br>14R-4.2 | R              | -                | -             | 37°30'01.9"N 126°51'58.7"E | -           | RNAV 1                   | -       |
| 002           | TF              | UD060               | -        | 171 (162.3)                      | 8.1                | -              | -6 000           | -             | 37°22'16.6"N 126°55'04.6"E | -           | RNAV 1                   | -       |
| 003           | TF              | UD080               | -        | 154 (145.5)                      | 10.0               | -              | @8 000           | -             | 37°14'03.3"N 127°02'08.6"E | -           | RNAV 1                   | -       |
| 004           | TF              | UG100               | -        | 156 (147.5)                      | 9.1                | -              | +10 000          | -             | 37°06'24.1"N 127°08'13.9"E | -           | RNAV 1                   | -       |
| 005           | TF              | UG130               | -        | 156 (147.8)                      | 10.2               | -              | @13 000          | -             | 36°57'45.7"N 127°15'01.2"E | -           | RNAV 1                   | -       |
| 006           | TF              | OSPOT               | -        | 156 (147.6)                      | 8.8                | -              | +FL 145          | -             | 36°50'18.1"N 127°20'54.9"E | -           | RNAV 1                   | -       |

RNAV EGOBA 2U

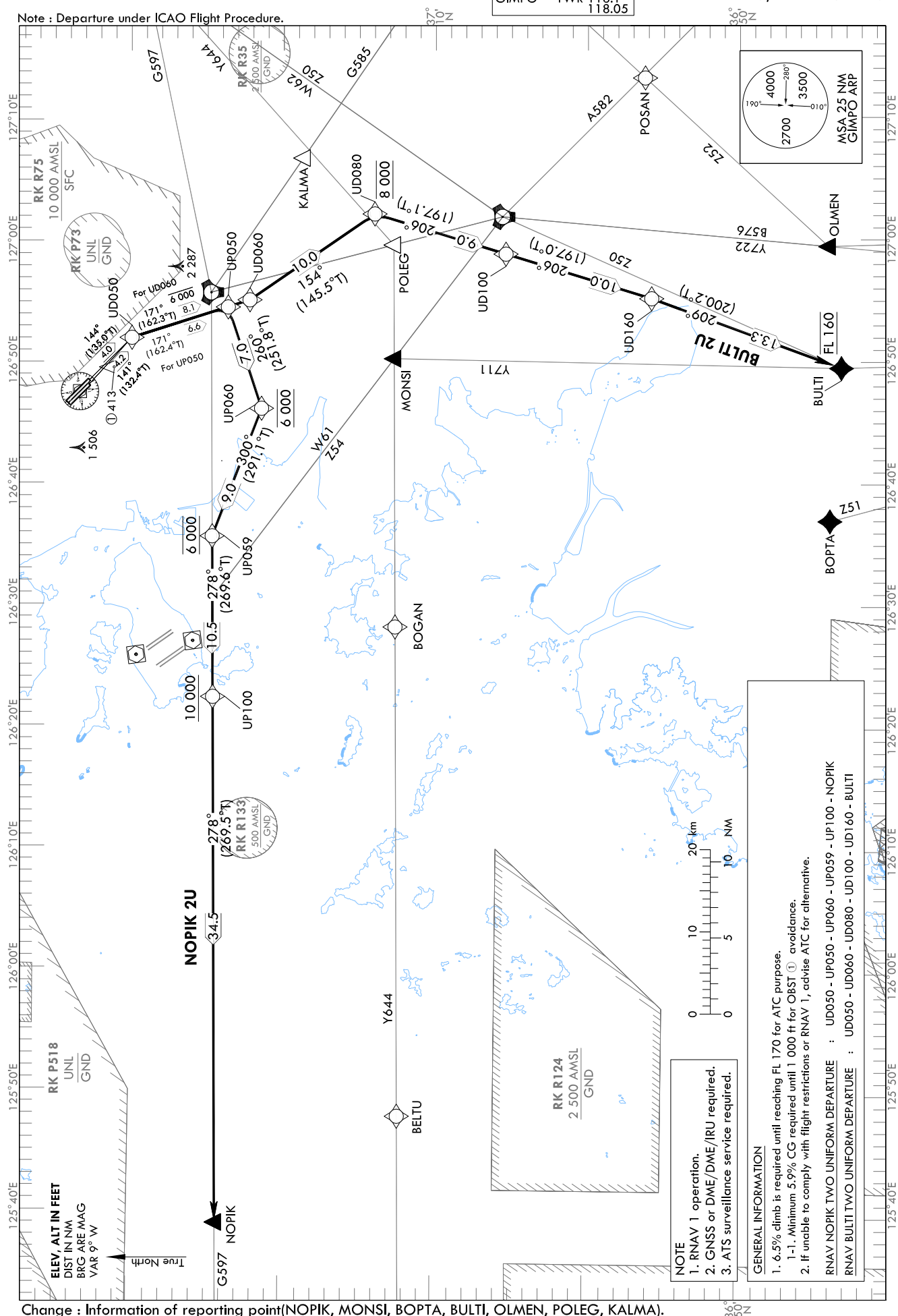
| Serial Number | Path Descriptor | Waypoint Identifier | Fly-over | Course/Track<br>°M(°T)           | Distance<br>(NM)   | Turn direction | Altitude<br>(ft) | Speed<br>(kt) | Coordinates                | VPA/<br>RDH | Navigation specification | Remarks |
|---------------|-----------------|---------------------|----------|----------------------------------|--------------------|----------------|------------------|---------------|----------------------------|-------------|--------------------------|---------|
| 001           | CF              | UD050               | -        | 14L-144(135.0)<br>14R-141(132.4) | 14L-4.0<br>14R-4.2 | R              | -                | -             | 37°30'01.9"N 126°51'58.7"E | -           | RNAV 1                   | -       |
| 002           | TF              | SEL                 | -        | 159 (150.3)                      | 6.0                | -              | -6 000           | -             | 37°24'49.0"N 126°55'42.1"E | -           | RNAV 1                   | -       |
| 003           | TF              | EGOBA               | -        | 087 (078.3)                      | 22.0               | -              | -9 000           | -             | 37°29'14.7"N 127°22'45.9"E | -           | RNAV 1                   | -       |

|            |     |        |
|------------|-----|--------|
| TRANSITION | ALT | 14 000 |
| TRANSITION | LVL | FL 140 |

|       |     |        |
|-------|-----|--------|
| SEOUL | DEP | 125.15 |
|       |     | 121.4  |
|       |     | 124.8  |
| GIMPO | TWR | 118.1  |
|       |     | 118.05 |

SEOUL/Gimpo Intl(RKSS)  
RWY 14L/R  
RNAV NOPIK 2U, RNAV BULTI 2U

Note : Departure under ICAO Flight Procedure.



Change : Information of reporting point(NOPIK, MONSI, BOPTA, BULTI, OLMEN, POLEG, KALMA).

SEOUL/Gimpo Intl(RKSS)

RWY 14L/R

RNAV NOPIK 2U, RNAV BULTI 2U

## AERONAUTICAL DATA TABULATION

## Standard Instrument Departure Procedure Coding Tables

## RNAV NOPIK 2U

| Serial Number | Path Descriptor | Waypoint Identifier | Fly-over | Course/Track<br>°M(°T)           | Distance (NM)      | Turn direction | Altitude (ft) | Speed (kt) | Coordinates                | VPA/RDH | Navigation specification | Remarks |
|---------------|-----------------|---------------------|----------|----------------------------------|--------------------|----------------|---------------|------------|----------------------------|---------|--------------------------|---------|
| 001           | CF              | UD050               | -        | 14L-144(135.0)<br>14R-141(132.4) | 14L-4.0<br>14R-4.2 | R              | -             | -          | 37°30'01.9"N 126°51'58.7"E | -       | RNAV 1                   | -       |
| 002           | TF              | UP050               | -        | 171 (162.4)                      | 6.6                | -              | -             | -          | 37°23'42.2"N 126°54'29.3"E | -       | RNAV 1                   | -       |
| 003           | TF              | UP060               | -        | 260 (251.8)                      | 7.0                | -              | @6 000        | -          | 37°21'30.5"N 126°46'08.9"E | -       | RNAV 1                   | -       |
| 004           | TF              | UP059               | -        | 300 (291.1)                      | 9.0                | -              | @6 000        | -          | 37°24'43.8"N 126°35'37.7"E | -       | RNAV 1                   | -       |
| 005           | TF              | UP100               | -        | 278 (269.6)                      | 10.5               | -              | +10 000       | -          | 37°24'38.7"N 126°22'23.8"E | -       | RNAV 1                   | -       |
| 006           | TF              | NOPIK               | -        | 278 (269.5)                      | 34.5               | -              | -             | -          | 37°24'12.0"N 125°39'05.0"E | -       | RNAV 1                   | -       |

## RNAV BULTI 2U

| Serial Number | Path Descriptor | Waypoint Identifier | Fly-over | Course/Track<br>°M(°T)           | Distance (NM)      | Turn direction | Altitude (ft) | Speed (kt) | Coordinates                | VPA/RDH | Navigation specification | Remarks |
|---------------|-----------------|---------------------|----------|----------------------------------|--------------------|----------------|---------------|------------|----------------------------|---------|--------------------------|---------|
| 001           | CF              | UD050               | -        | 14L-144(135.0)<br>14R-141(132.4) | 14L-4.0<br>14R-4.2 | R              | -             | -          | 37°30'01.9"N 126°51'58.7"E | -       | RNAV 1                   | -       |
| 002           | TF              | UD060               | -        | 171 (162.3)                      | 8.1                | -              | -6 000        | -          | 37°22'16.6"N 126°55'04.6"E | -       | RNAV 1                   | -       |
| 003           | TF              | UD080               | -        | 154 (145.5)                      | 10.0               | -              | @8 000        | -          | 37°14'03.3"N 127°02'08.6"E | -       | RNAV 1                   | -       |
| 004           | TF              | UD100               | -        | 206 (197.1)                      | 9.0                | -              | -             | -          | 37°05'26.4"N 126°58'50.5"E | -       | RNAV 1                   | -       |
| 005           | TF              | UD160               | -        | 206 (197.0)                      | 10.0               | -              | -             | -          | 36°55'51.6"N 126°55'11.3"E | -       | RNAV 1                   | -       |
| 006           | TF              | BULTI               | -        | 209 (200.2)                      | 13.3               | -              | @FL 160       | -          | 36°43'22.3"N 126°49'29.7"E | -       | RNAV 1                   | -       |

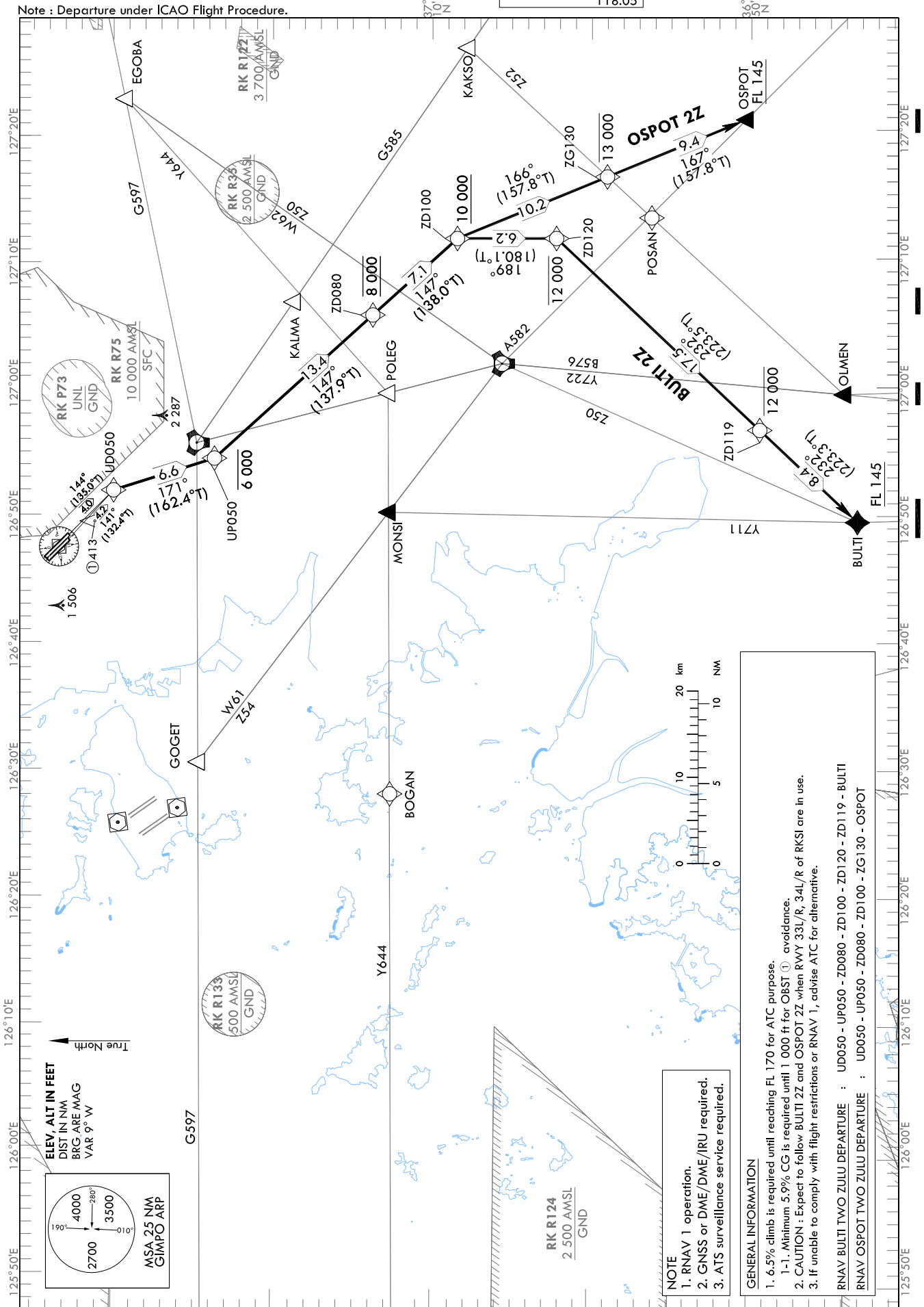
STANDARD DEPARTURE CHART  
INSTRUMENT (SID) - ICAO

TRANSITION ALT 14 000  
TRANSITION LVL FL 140

|       |     |        |
|-------|-----|--------|
| SEOUL | DEP | 125.15 |
|       |     | 121.4  |
|       |     | 124.8  |
| GIMPO | TWR | 118.1  |
|       |     | 118.05 |

SEOUL/Gimpo Intl(RKSS)  
RWY 14L/R  
RNAV BULTI 2Z, RNAV OSPOT 2Z

Note : Departure under ICAO Flight Procedure.



Change : Information of reporting point(MONSI, BULTI, OLMEN, OSPOT, POLEG, KALMA).

SEOUL/Gimpo Intl(RKSS)  
RWY 14L/R  
RNAV BULTI 2Z, RNAV OSPOT 2Z

## AERONAUTICAL DATA TABULATION

## Standard Instrument Departure Procedure Coding Tables

## RNAV BULTI 2Z

| Serial Number | Path Descriptor | Waypoint Identifier | Fly-over | Course/Track<br>°M(°T)           | Distance<br>(NM)   | Turn direction | Altitude<br>(ft) | Speed<br>(kt) | Coordinates                | VPA/<br>RDH | Navigation specification | Remarks |
|---------------|-----------------|---------------------|----------|----------------------------------|--------------------|----------------|------------------|---------------|----------------------------|-------------|--------------------------|---------|
| 001           | CF              | UD050               | -        | 14L-144(135.0)<br>14R-141(132.4) | 14L-4.0<br>14R-4.2 | R              | -                | -             | 37°30'01.9"N 126°51'58.7"E | -           | RNAV 1                   | -       |
| 002           | TF              | UP050               | -        | 171 (162.4)                      | 6.6                | -              | -6 000           | -             | 37°23'42.2"N 126°54'29.3"E | -           | RNAV 1                   | -       |
| 003           | TF              | ZD080               | -        | 147 (137.9)                      | 13.4               | -              | @8 000           | -             | 37°13'46.2"N 127°05'43.1"E | -           | RNAV 1                   | -       |
| 004           | TF              | ZD100               | -        | 147 (138.0)                      | 7.1                | -              | +10 000          | -             | 37°08'27.2"N 127°11'42.1"E | -           | RNAV 1                   | -       |
| 005           | TF              | ZD120               | -        | 189 (180.1)                      | 6.2                | -              | -12 000          | -             | 37°02'14.2"N 127°11'41.1"E | -           | RNAV 1                   | -       |
| 006           | TF              | ZD119               | -        | 232 (223.5)                      | 17.5               | -              | -12 000          | -             | 36°49'30.3"N 126°56'40.8"E | -           | RNAV 1                   | -       |
| 007           | TF              | BULTI               | -        | 232 (223.3)                      | 8.4                | -              | +FL 145          | -             | 36°43'22.3"N 126°49'29.7"E | -           | RNAV 1                   | -       |

## RNAV OSPOT 2Z

| Serial Number | Path Descriptor | Waypoint Identifier | Fly-over | Course/Track<br>°M(°T)           | Distance<br>(NM)   | Turn direction | Altitude<br>(ft) | Speed<br>(kt) | Coordinates                | VPA/<br>RDH | Navigation specification | Remarks |
|---------------|-----------------|---------------------|----------|----------------------------------|--------------------|----------------|------------------|---------------|----------------------------|-------------|--------------------------|---------|
| 001           | CF              | UD050               | -        | 14L-144(135.0)<br>14R-141(132.4) | 14L-4.0<br>14R-4.2 | R              | -                | -             | 37°30'01.9"N 126°51'58.7"E | -           | RNAV 1                   | -       |
| 002           | TF              | UP050               | -        | 171 (162.4)                      | 6.6                | -              | -6 000           | -             | 37°23'42.2"N 126°54'29.3"E | -           | RNAV 1                   | -       |
| 003           | TF              | ZD080               | -        | 147 (137.9)                      | 13.4               | -              | @8 000           | -             | 37°13'46.2"N 127°05'43.1"E | -           | RNAV 1                   | -       |
| 004           | TF              | ZD100               | -        | 147 (138.0)                      | 7.1                | -              | +10 000          | -             | 37°08'27.2"N 127°11'42.1"E | -           | RNAV 1                   | -       |
| 005           | TF              | ZG130               | -        | 166 (157.8)                      | 10.2               | -              | -13 000          | -             | 36°59'01.9"N 127°16'29.6"E | -           | RNAV 1                   | -       |
| 006           | TF              | OSPOT               | -        | 167 (157.8)                      | 9.4                | -              | +FL 145          | -             | 36°50'18.1"N 127°20'54.9"E | -           | RNAV 1                   | -       |

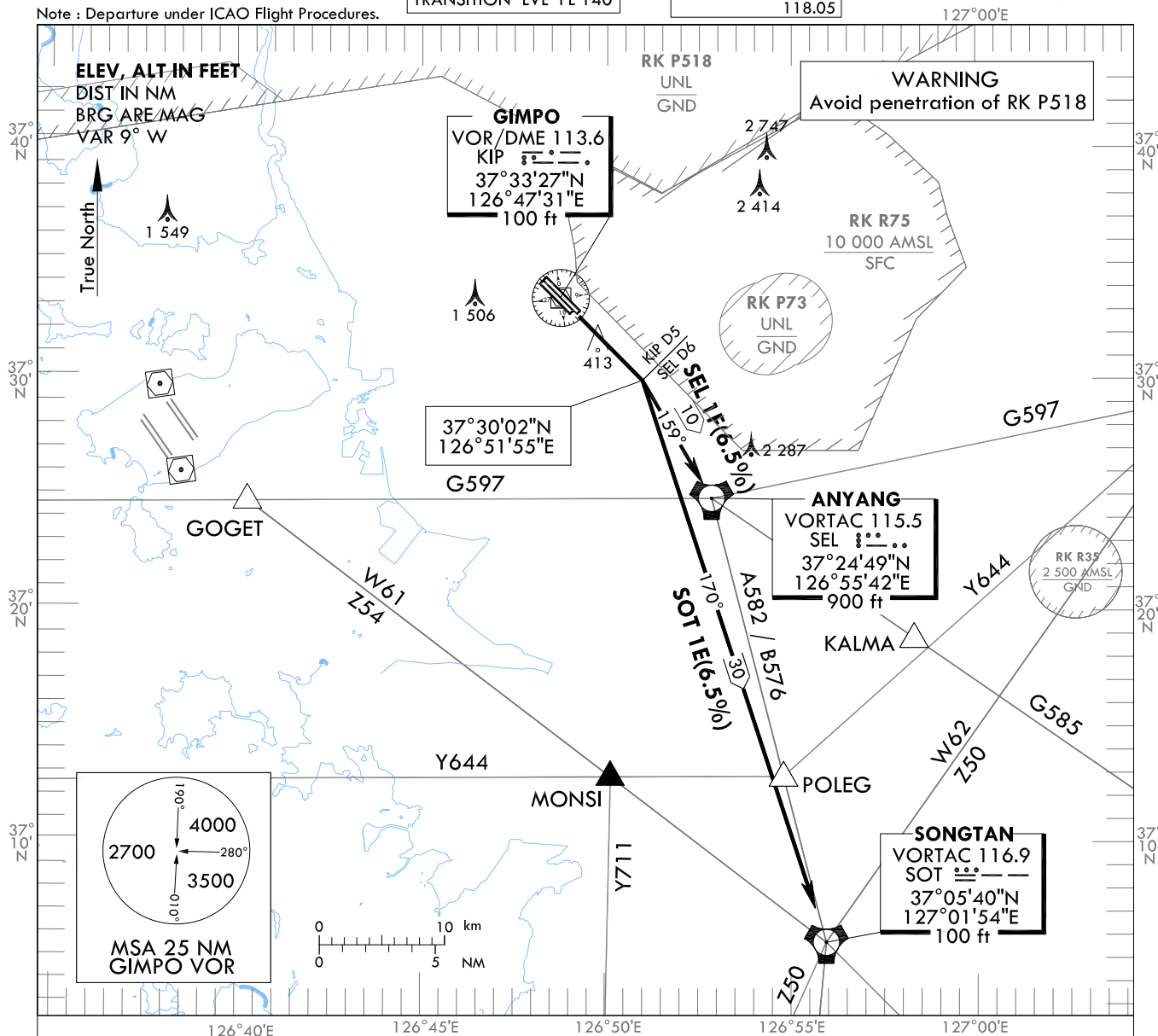
**STANDARD DEPARTURE CHART  
INSTRUMENT (SID) - ICAO**

TRANSITION ALT 14 000  
TRANSITION LVL FL 140

|           |        |
|-----------|--------|
| SEOUL DEP | 125.15 |
|           | 121.4  |
|           | 124.8  |
| GIMPO TWR | 118.1  |
|           | 118.05 |

**SEOUL/Gimpo Intl(RKSS)**  
RWY 14L/R  
SEL 1F, SOT 1E

Note : Departure under ICAO Flight Procedures.



**GENERAL INFORMATION**

1. 6.5% CG necessary for Airspace and ATC purpose and 4.4% for avoiding OBST.
2. If unable to comply with flight restrictions, advise ATC well before departure.
3. Stepped climb : Due to interaction with other routes.

**SEL(ANYANG) ONE FOXTROT DEPARTURE :**

TAKE OFF RWY 14 L/R : Direct R 144 KIP/D5(if KIP not available, climb on runway HDG) turn right to intercept R 339 SEL and proceed to SEL Cross SEL at or above 4 000 ft.  
Maintain 6 000 ft until instructed by ATC.  
- For airway B576 or A582, cross 4 DME south of SEL at or above 5 000 ft  
SOT at or above 11 000 ft, 8 DME south of SOT at or above FL 150 unless cleared by ATC.  
- For airway G597 cross EGOBA at or above 8 000 ft unless cleared by ATC.

**SOT(SONGTAN) ONE ECHO DEPARTURE :**

TAKE OFF RWY 14 L/R : Direct R 144 KIP/D5(if KIP not available, climb on runway HDG) turn right to intercept R 350 SOT and proceed to SOT. Maintain 6 000 ft until instructed by ATC.

Change : Information of reporting point(MONSI, POLEG, KALMA).

**INTENTIONALLY**

**LEFT**

**BLANK**



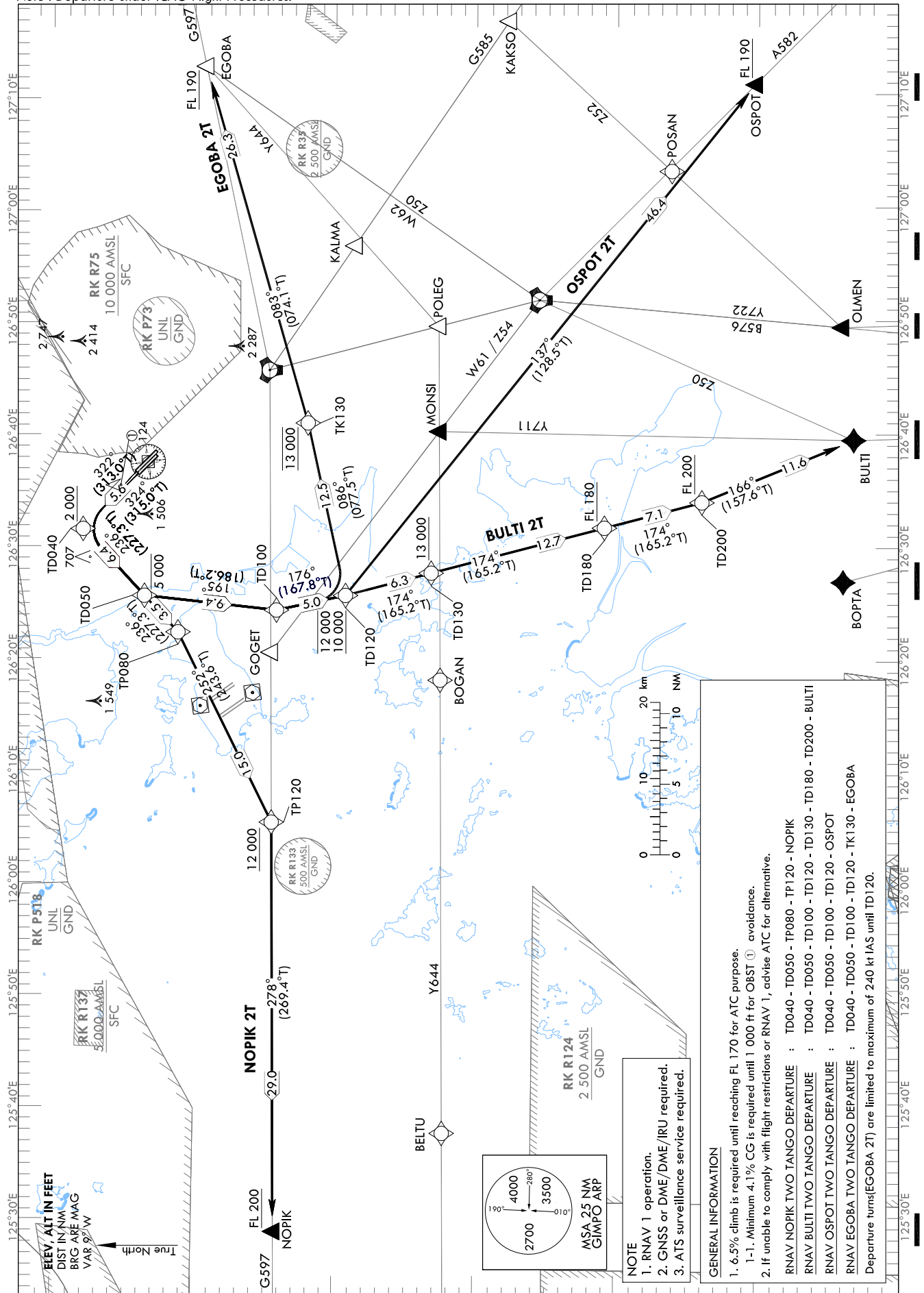
STANDARD DEPARTURE CHART  
INSTRUMENT (SID) - ICAO

TRANSITION ALT 14 000  
TRANSITION LVL FL 140

SEOUL DEP 125.15  
121.4  
124.8  
GIMPO TWR 118.1  
118.05

SEOUL/Gimpo Intl(RKSS)  
RWY 32L/R  
RNAV NOPIK 2T, RNAV BULTI 2T  
RNAV OSPOT 2T, RNAV EGOBA 2T

Note : Departure under ICAO Flight Procedures.



NOTE  
1. RNAV 1 operation.  
2. GNSS or DME/DME/IRU required.  
3. ATIS surveillance service required.

GENERAL INFORMATION

- 6.5% climb is required until reaching FL 170 for ATC purpose.
  - 1-1. Minimum 4.1% CG is required until 1 000 ft for OBST ① avoidance.
  - If unable to comply with flight restrictions or RNAV 1, advise ATC for alternative.
- RNAV NOPIK TWO TANGO DEPARTURE : TD040 - TD050 - TP080 - TP120 - NOPIK  
 RNAV BULTI TWO TANGO DEPARTURE : TD040 - TD050 - TD100 - TD120 - TD130 - TD180 - TD200 - BULTI  
 RNAV OSPOT TWO TANGO DEPARTURE : TD040 - TD050 - TD100 - TD120 - OSPOT  
 RNAV EGOBA TWO TANGO DEPARTURE : TD040 - TD050 - TD100 - TD120 - TK130 - EGOBA  
 Departure turns(EGOBA 2T) are limited to maximum of 240 kt IAS until TD120.

Change : Information of reporting point(NOPIK, MONSI, BOPTA, BULTI, OLMEN, OSPOT, POLEG, KALMA).

SEOUL/Gimpo Intl(RKSS)

RWY 32L/R

RNAV NOPIK 2T, RNAV BULTI 2T

## AERONAUTICAL DATA TABULATION

## Standard Instrument Departure Procedure Coding Tables

## RNAV NOPIK 2T

| Serial Number | Path Descriptor | Waypoint Identifier | Fly-over | Course/Track<br>°M(°T)           | Distance<br>(NM) | Turn direction | Altitude<br>(ft) | Speed<br>(kt) | Coordinates                | VPA/<br>RDH | Navigation specification | Remarks |
|---------------|-----------------|---------------------|----------|----------------------------------|------------------|----------------|------------------|---------------|----------------------------|-------------|--------------------------|---------|
| 001           | CF              | TD040               | -        | 32L-324(315.0)<br>32R-322(313.0) | 5.6              | L              | +2 000           | -             | 37°38'03.0"N 126°41'33.7"E | -           | RNAV 1                   | -       |
| 002           | TF              | TD050               | -        | 236 (227.3)                      | 6.4              | -              | -5 000           | -             | 37°33'41.1"N 126°35'37.1"E | -           | RNAV 1                   | -       |
| 003           | TF              | TP080               | -        | 236 (227.3)                      | 3.5              | -              | -                | -             | 37°31'17.7"N 126°32'22.3"E | -           | RNAV 1                   | -       |
| 004           | TF              | TP120               | -        | 252 (243.6)                      | 15.0             | -              | +12 000          | -             | 37°24'35.5"N 126°15'29.3"E | -           | RNAV 1                   | -       |
| 005           | TF              | NOPIK               | -        | 278 (269.4)                      | 29.0             | -              | +FL 200          | -             | 37°24'12.0"N 125°39'05.0"E | -           | RNAV 1                   | -       |

## RNAV BULTI 2T

| Serial Number | Path Descriptor | Waypoint Identifier | Fly-over | Course/Track<br>°M(°T)           | Distance<br>(NM) | Turn direction | Altitude<br>(ft)   | Speed<br>(kt) | Coordinates                | VPA/<br>RDH | Navigation specification | Remarks |
|---------------|-----------------|---------------------|----------|----------------------------------|------------------|----------------|--------------------|---------------|----------------------------|-------------|--------------------------|---------|
| 001           | CF              | TD040               | -        | 32L-324(315.0)<br>32R-322(313.0) | 5.6              | L              | +2 000             | -             | 37°38'03.0"N 126°41'33.7"E | -           | RNAV 1                   | -       |
| 002           | TF              | TD050               | -        | 236 (227.3)                      | 6.4              | -              | -5 000             | -             | 37°33'41.1"N 126°35'37.1"E | -           | RNAV 1                   | -       |
| 003           | TF              | TD100               | -        | 195 (186.2)                      | 9.4              | -              | -                  | -             | 37°24'18.8"N 126°34'21.2"E | -           | RNAV 1                   | -       |
| 004           | TF              | TD120               | -        | 176 (167.8)                      | 5.0              | -              | -12 000<br>+10 000 | -             | 37°19'24.8"N 126°35'40.7"E | -           | RNAV 1                   | -       |
| 005           | TF              | TD130               | -        | 174 (165.2)                      | 6.3              | -              | +13 000            | -             | 37°13'20.6"N 126°37'40.9"E | -           | RNAV 1                   | -       |
| 006           | TF              | TD180               | -        | 174 (165.2)                      | 12.7             | -              | +FL 180            | -             | 37°01'03.4"N 126°41'43.1"E | -           | RNAV 1                   | -       |
| 007           | TF              | TD200               | -        | 174 (165.2)                      | 7.1              | -              | +FL 200            | -             | 36°54'08.6"N 126°43'59.3"E | -           | RNAV 1                   | -       |
| 008           | TF              | BULTI               | -        | 166 (157.6)                      | 11.6             | -              | -                  | -             | 36°43'22.3"N 126°49'29.7"E | -           | RNAV 1                   | -       |

SEOUL/Gimpo Intl(RKSS)

RWY 32L/R

RNAV OSPOT 2T, RNAV EGOBA 2T

## AERONAUTICAL DATA TABULATION

## Standard Instrument Departure Procedure Coding Tables

## RNAV OSPOT 2T

| Serial Number | Path Descriptor | Waypoint Identifier | Fly-over | Course/Track<br>°M(°T)           | Distance<br>(NM) | Turn direction | Altitude<br>(ft)   | Speed<br>(kt) | Coordinates                | VPA/<br>RDH | Navigation specification | Remarks |
|---------------|-----------------|---------------------|----------|----------------------------------|------------------|----------------|--------------------|---------------|----------------------------|-------------|--------------------------|---------|
| 001           | CF              | TD040               | -        | 32L-324(315.0)<br>32R-322(313.0) | 5.6              | L              | +2 000             | -             | 37°38'03.0"N 126°41'33.7"E | -           | RNAV 1                   | -       |
| 002           | TF              | TD050               | -        | 236 (227.3)                      | 6.4              | -              | -5 000             | -             | 37°33'41.1"N 126°35'37.1"E | -           | RNAV 1                   | -       |
| 003           | TF              | TD100               | -        | 195 (186.2)                      | 9.4              | -              | -                  | -             | 37°24'18.8"N 126°34'21.2"E | -           | RNAV 1                   | -       |
| 004           | TF              | TD120               | -        | 176 (167.8)                      | 5.0              | -              | -12 000<br>+10 000 | -             | 37°19'24.8"N 126°35'40.7"E | -           | RNAV 1                   | -       |
| 005           | TF              | OSPOT               | -        | 137 (128.5)                      | 46.4             | -              | +FL 190            | -             | 36°50'18.1"N 127°20'54.9"E | -           | RNAV 1                   | -       |

## RNAV EGOBA 2T

| Serial Number | Path Descriptor | Waypoint Identifier | Fly-over | Course/Track<br>°M(°T)           | Distance<br>(NM) | Turn direction | Altitude<br>(ft)   | Speed<br>(kt) | Coordinates                | VPA/<br>RDH | Navigation specification | Remarks |
|---------------|-----------------|---------------------|----------|----------------------------------|------------------|----------------|--------------------|---------------|----------------------------|-------------|--------------------------|---------|
| 001           | CF              | TD040               | -        | 32L-324(315.0)<br>32R-322(313.0) | 5.6              | L              | +2 000             | -240          | 37°38'03.0"N 126°41'33.7"E | -           | RNAV 1                   | -       |
| 002           | TF              | TD050               | -        | 236 (227.3)                      | 6.4              | -              | -5 000             | -240          | 37°33'41.1"N 126°35'37.1"E | -           | RNAV 1                   | -       |
| 003           | TF              | TD100               | -        | 195 (186.2)                      | 9.4              | -              | -                  | -240          | 37°24'18.8"N 126°34'21.2"E | -           | RNAV 1                   | -       |
| 004           | TF              | TD120               | -        | 176 (167.8)                      | 5.0              | -              | -12 000<br>+10 000 | -240          | 37°19'24.8"N 126°35'40.7"E | -           | RNAV 1                   | -       |
| 005           | TF              | TK130               | -        | 086 (077.5)                      | 12.5             | -              | @13 000            | -             | 37°22'05.9"N 126°51'00.0"E | -           | RNAV 1                   | -       |
| 006           | TF              | EGOBA               | -        | 083 (074.1)                      | 26.3             | -              | +FL 190            | -             | 37°29'14.7"N 127°22'45.9"E | -           | RNAV 1                   | -       |

Change : Information of standard instrument departure procedure for RWY 32L/R.

**INTENTIONALLY**

**LEFT**

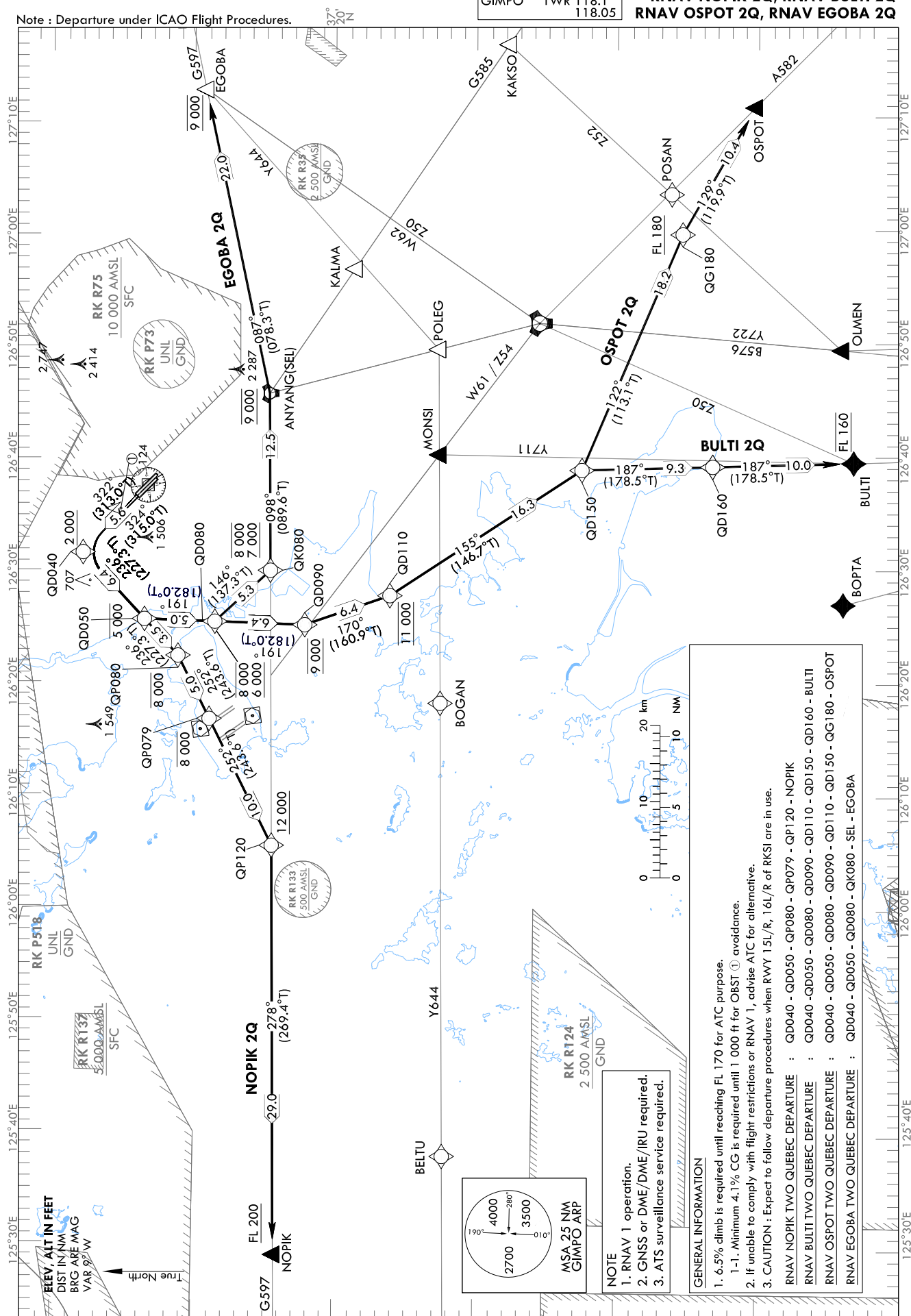
**BLANK**

|       |     |        |
|-------|-----|--------|
| SEOUL | DEP | 125.15 |
|       |     | 121.4  |
|       |     | 124.8  |
| GIMPO | TWR | 118.1  |
|       |     | 118.05 |

RWY 32L/R

**RNAV NOPIK 2Q, RNAV BULTI 2Q**  
**RNAV OSPOT 2Q, RNAV EGOBA 2Q**

Note : Departure under ICAO Flight Procedures.



Change : Establishment of name of SEL.

SEOUL/Gimpo Intl(RKSS)

RWY 32L/R

RNAV NOPIK 2Q, RNAV BULTI 2Q

## AERONAUTICAL DATA TABULATION

## Standard Instrument Departure Procedure Coding Tables

## RNAV NOPIK 2Q

| Serial Number | Path Descriptor | Waypoint Identifier | Fly-over | Course/Track<br>°M(°T)           | Distance<br>(NM) | Turn direction | Altitude<br>(ft) | Speed<br>(kt) | Coordinates                | VPA/<br>RDH | Navigation specification | Remarks |
|---------------|-----------------|---------------------|----------|----------------------------------|------------------|----------------|------------------|---------------|----------------------------|-------------|--------------------------|---------|
| 001           | CF              | QD040               | -        | 32L-324(315.0)<br>32R-322(313.0) | 5.6              | L              | +2 000           | -             | 37°38'03.0"N 126°41'33.7"E | -           | RNAV 1                   | -       |
| 002           | TF              | QD050               | -        | 236 (227.3)                      | 6.4              | -              | -5 000           | -             | 37°33'41.1"N 126°35'37.1"E | -           | RNAV 1                   | -       |
| 003           | TF              | QP080               | -        | 236 (227.3)                      | 3.5              | -              | -8 000           | -             | 37°31'17.7"N 126°32'22.3"E | -           | RNAV 1                   | -       |
| 004           | TF              | QP079               | -        | 252 (243.6)                      | 5.0              | -              | -8 000           | -             | 37°29'04.1"N 126°26'44.7"E | -           | RNAV 1                   | -       |
| 005           | TF              | QP120               | -        | 252 (243.6)                      | 10.0             | -              | +12 000          | -             | 37°24'35.5"N 126°15'29.3"E | -           | RNAV 1                   | -       |
| 006           | TF              | NOPIK               | -        | 278 (269.4)                      | 29.0             | -              | +FL 200          | -             | 37°24'12.0"N 125°39'05.0"E | -           | RNAV 1                   | -       |

## RNAV BULTI 2Q

| Serial Number | Path Descriptor | Waypoint Identifier | Fly-over | Course/Track<br>°M(°T)           | Distance<br>(NM) | Turn direction | Altitude<br>(ft) | Speed<br>(kt) | Coordinates                | VPA/<br>RDH | Navigation specification | Remarks |
|---------------|-----------------|---------------------|----------|----------------------------------|------------------|----------------|------------------|---------------|----------------------------|-------------|--------------------------|---------|
| 001           | CF              | QD040               | -        | 32L-324(315.0)<br>32R-322(313.0) | 5.6              | L              | +2 000           | -             | 37°38'03.0"N 126°41'33.7"E | -           | RNAV 1                   | -       |
| 002           | TF              | QD050               | -        | 236 (227.3)                      | 6.4              | -              | -5 000           | -             | 37°33'41.1"N 126°35'37.1"E | -           | RNAV 1                   | -       |
| 003           | TF              | QD080               | -        | 191(182.0)                       | 5.0              | -              | -8 000<br>+6 000 | -             | 37°28'41.3"N 126°35'23.9"E | -           | RNAV 1                   | -       |
| 004           | TF              | QD090               | -        | 191(182.0)                       | 6.4              | -              | @9 000           | -             | 37°22'18.4"N 126°35'07.0"E | -           | RNAV 1                   | -       |
| 005           | TF              | QD110               | -        | 170 (160.9)                      | 6.4              | -              | @11 000          | -             | 37°16'16.3"N 126°37'43.8"E | -           | RNAV 1                   | -       |
| 006           | TF              | QD150               | -        | 155 (146.7)                      | 16.3             | -              | -                | -             | 37°02'39.6"N 126°48'52.6"E | -           | RNAV 1                   | -       |
| 007           | TF              | QD160               | -        | 187 (178.5)                      | 9.3              | -              | -                | -             | 36°53'22.9"N 126°49'10.5"E | -           | RNAV 1                   | -       |
| 008           | TF              | BULTI               | -        | 187 (178.5)                      | 10.0             | -              | @FL 160          | -             | 36°43'22.3"N 126°49'29.7"E | -           | RNAV 1                   | -       |

SEOUL/Gimpo Intl(RKSS)

RWY 32L/R

RNAV OSPOT 2Q, RNAV EGOBA 2Q

## AERONAUTICAL DATA TABULATION

## Standard Instrument Departure Procedure Coding Tables

## RNAV OSPOT 2Q

| Serial Number | Path Descriptor | Waypoint Identifier | Fly-over | Course/Track °M(°T)              | Distance (NM) | Turn direction | Altitude (ft)    | Speed (kt) | Coordinates                | VPA/RDH | Navigation specification | Remarks |
|---------------|-----------------|---------------------|----------|----------------------------------|---------------|----------------|------------------|------------|----------------------------|---------|--------------------------|---------|
| 001           | CF              | QD040               | -        | 32L-324(315.0)<br>32R-322(313.0) | 5.6           | L              | +2 000           | -          | 37°38'03.0"N 126°41'33.7"E | -       | RNAV 1                   | -       |
| 002           | TF              | QD050               | -        | 236 (227.3)                      | 6.4           | -              | -5 000           | -          | 37°33'41.1"N 126°35'37.1"E | -       | RNAV 1                   | -       |
| 003           | TF              | QD080               | -        | 191 (182.0)                      | 5.0           | -              | -8 000<br>+6 000 | -          | 37°28'41.3"N 126°35'23.9"E | -       | RNAV 1                   | -       |
| 004           | TF              | QD090               | -        | 191 (182.0)                      | 6.4           | -              | @9 000           | -          | 37°22'18.4"N 126°35'07.0"E | -       | RNAV 1                   | -       |
| 005           | TF              | QD110               | -        | 170 (166.9)                      | 6.4           | -              | @11 000          | -          | 37°16'16.3"N 126°37'43.8"E | -       | RNAV 1                   | -       |
| 006           | TF              | QD150               | -        | 155 (146.7)                      | 16.3          | -              | -                | -          | 37°02'39.6"N 126°48'52.6"E | -       | RNAV 1                   | -       |
| 007           | TF              | QG180               | -        | 122 (113.1)                      | 18.2          | -              | +FL 180          | -          | 36°55'29.2"N 127°09'43.6"E | -       | RNAV 1                   | -       |
| 008           | TF              | OSPOT               | -        | 129 (119.9)                      | 10.4          | -              | -                | -          | 36°50'18.1"N 127°20'54.9"E | -       | RNAV 1                   | -       |

## RNAV EGOBA 2Q

| Serial Number | Path Descriptor | Waypoint Identifier | Fly-over | Course/Track °M(°T)              | Distance (NM) | Turn direction | Altitude (ft)    | Speed (kt) | Coordinates                | VPA/RDH | Navigation specification | Remarks |
|---------------|-----------------|---------------------|----------|----------------------------------|---------------|----------------|------------------|------------|----------------------------|---------|--------------------------|---------|
| 001           | CF              | QD040               | -        | 32L-324(315.0)<br>32R-322(313.0) | 5.6           | L              | +2 000           | -          | 37°38'03.0"N 126°41'33.7"E | -       | RNAV 1                   | -       |
| 002           | TF              | QD050               | -        | 236 (227.3)                      | 6.4           | -              | -5 000           | -          | 37°33'41.1"N 126°35'37.1"E | -       | RNAV 1                   | -       |
| 003           | TF              | QD080               | -        | 191 (182.0)                      | 5.0           | -              | -8 000<br>+6 000 | -          | 37°28'41.3"N 126°35'23.9"E | -       | RNAV 1                   | -       |
| 004           | TF              | QK080               | -        | 146 (137.3)                      | 5.3           | -              | -8 000<br>+7 000 | -          | 37°24'45.2"N 126°39'57.2"E | -       | RNAV 1                   | -       |
| 005           | TF              | SEL                 | -        | 098 (089.6)                      | 12.5          | -              | @9 000           | -          | 37°24'49.0"N 126°55'42.1"E | -       | RNAV 1                   | -       |
| 006           | TF              | EGOBA               | -        | 087 (078.3)                      | 22.0          | -              | @9 000           | -          | 37°29'14.7"N 127°22'45.9"E | -       | RNAV 1                   | -       |

Change : Information of standard instrument departure procedure for RWY 32L/R.

**INTENTIONALLY**

**LEFT**

**BLANK**



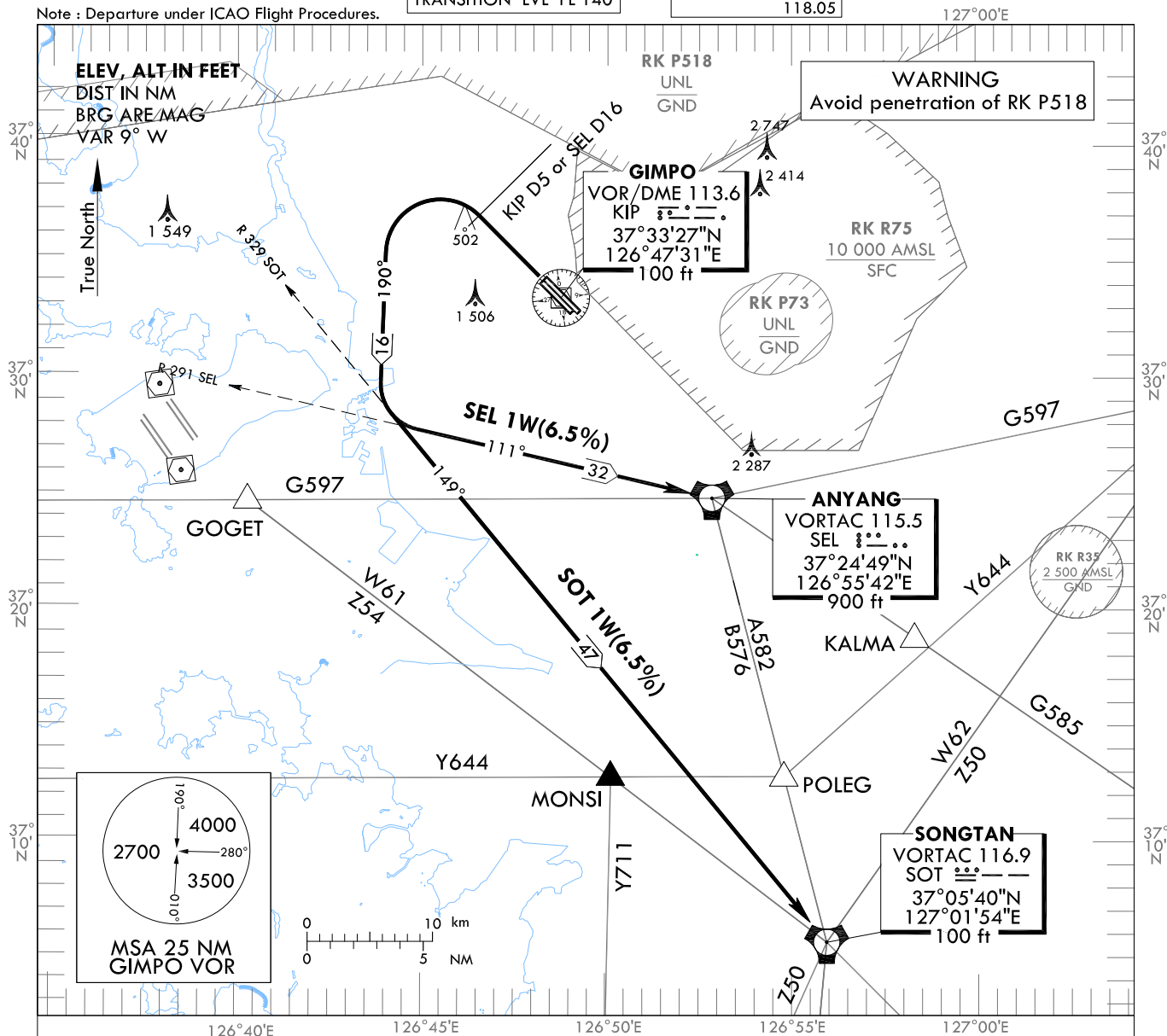
**STANDARD DEPARTURE CHART  
INSTRUMENT (SID) - ICAO**

TRANSITION ALT 14 000  
TRANSITION LVL FL 140

SEOUL DEP 125.15  
121.4  
124.8  
GIMPO TWR 118.1  
118.05

**SEOUL/Gimpo Intl(RKSS)**  
RWY 32L/R  
SEL 1W, SOT 1W

Note : Departure under ICAO Flight Procedures.



**GENERAL INFORMATION**

1. 6.5% CG necessary for Airspace and ATC purpose and 4.8% for avoiding OBST.
2. If unable to comply with flight restrictions, advise ATC well before departure.
3. Stepped climb : Due to interaction with other routes. Do not climb above 4 000 ft unless cleared by ATC.
4. First turn limited maximum 250 kt IAS.
5. All of turns are based on 25 degrees bank angle due to airspace restriction.

**SEL(ANYANG) ONE WHISKY DEPARTURE :**

Climb on R 324 KIP(or RWY HDG) until KIP D5(or SEL D16),  
then turn left HDG 190° to intercept R 291 SEL then proceed to SEL.  
Maintain 4 000 ft until instructed by ATC.

**SOT(SONGTAN) ONE WHISKY DEPARTURE :**

Climb on R 324 KIP(or RWY HDG) until KIP D5(or SEL D16),  
then turn left HDG 190° to intercept R 329 SOT then proceed to SOT.  
Maintain 4 000 ft until instructed by ATC.

Change : Information of reporting point(MONSI, POLEG, KALMA).

**INTENTIONALLY**

**LEFT**

**BLANK**

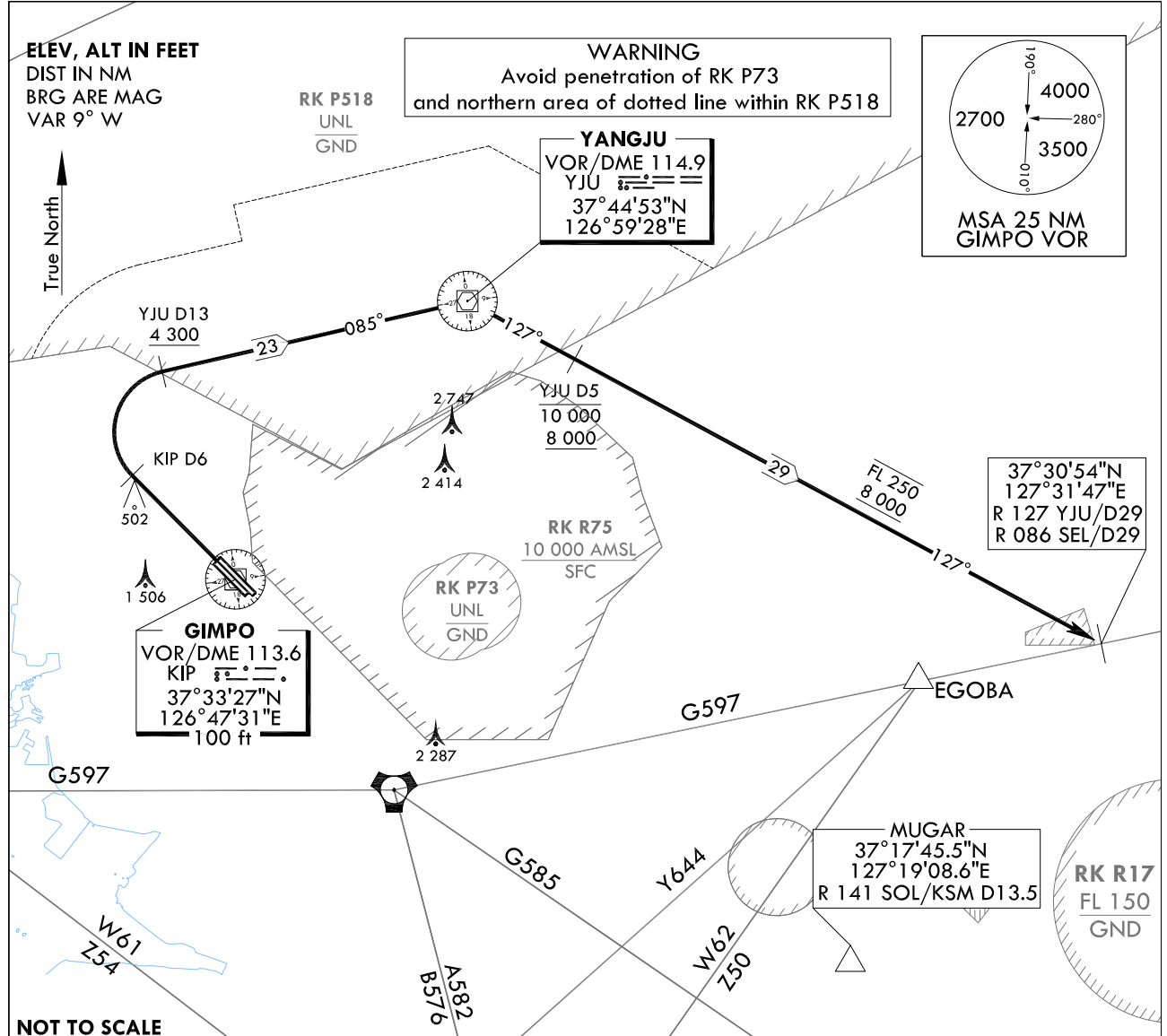
**STANDARD DEPARTURE CHART  
INSTRUMENT (SID) - ICAO**

TRANSITION ALT 14 000  
TRANSITION LVL FL 140

|           |        |
|-----------|--------|
| SEOUL DEP | 125.15 |
|           | 121.4  |
|           | 124.8  |
| GIMPO TWR | 118.1  |
|           | 118.05 |

**SEOUL/Gimpo Intl(RKSS)**  
**RWY 32L/R**  
**KARBU 1W**

Note : Departure under ICAO Flight Procedures.



**NOTE**

1. Minimum CG 7% to 4 300 ft for noise abatement, then resume normal CG.
2. Request of this procedure shall be made at least 10 minutes prior to take-off.
3. Operating Hours
  - SAT, SUN and Holiday : 0300-1200 UTC
  - Other days : 0700-1200 UTC

**KARBU ONE WHISKY DEPARTURE :**

Climb on R 324 KIP to D6, then turn right to intercept R 265 YJU/D13, then proceed to YJU.  
At YJU, turn right to track outbound R 127 YJU until joining G597.  
Cross R 265 YJU/D13 at or above 4 300 ft, R 127 YJU/D5 between 8 000 ft and 10 000 ft,  
then at or below FL 250 until joining G597.

Change : Establishment of fix(MUGAR).

**INTENTIONALLY**

**LEFT**

**BLANK**